



4/49-51 Mitchell Road Brookvale NSW

2 

Ideal Warehouse Space in Central Brookvale. Perfect for an entry level investment or small business type. Situated in the ever popular Major Mitchell Complex in Brookvale.

It features:

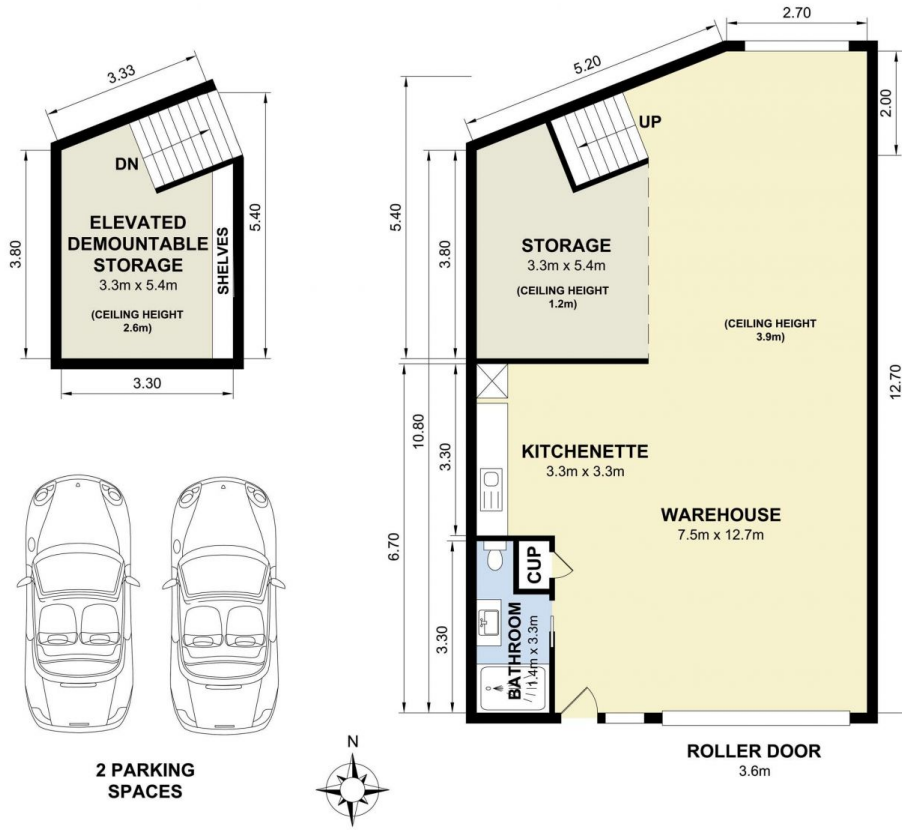
- * 3 Phase Power
- * Rollershutter access
- * All weather loading
- * Mezzanine Storage
- * Black out blinds on Windows and Doors
- * Renovated bathroom w/shower
- * Kitchenette and amenities
- * Designated parking

Warehouse of this size, price and calibre don't come up that often, be Quick !

Price : \$795,000 nil GST
Building Size : 92 sqm
Land Size : 92 sqm
View : <https://www.bridgerealty.com.au/sale/nsw/northern-beaches/brookvale/commercial/industrial/8010613>



Andrew Holland
0423 314 862



4/49-51 Mitchell Road, Brookvale

Measurements are approximate. Not to scale. Illustrative purposes only. Open2view does not take any responsibility for any information supplied.